

## Features

Product Name	MINI
Technology	Dual camera blue structured light
Single-frame Precision	0.02mm
Single-frame Accuracy	0.05mm
Point Distance	0.05mm
Single Capture Range	64mm × 118mm
Working Distance	100 mm – 200 mm
Minimum Scan Volume	10mm × 10mm × 10mm
Scanning Speed	Up to 10fps
Scanning Methods	Hand-held and turntable scanning
Light Source	Class I blue light
Alignment Methods	Feature / Marker
Output Formats	PLY, OBJ, STL
Textured Scan	Yes
Special Object Scanning	For transparent and highly reflective objects, please use scanning spray.
Scanning Environment	Indoor and outdoor, but not in direct sunlight.
Compatible with	Windows 8/10/11 (64-bit), Android, iOS, macOS
Notes:	*Accuracy was tested in a standard lab environment. Results might vary depending on the operating environment. *Windows 7 is not supported.

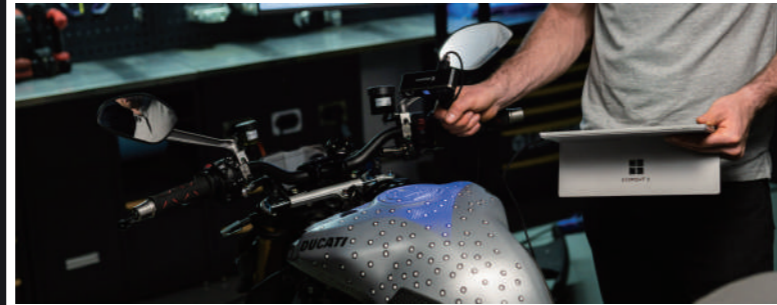
+86-18691575663

<https://www.revopoint3d.com>

[sales@revopoint3d.com](mailto:sales@revopoint3d.com)

Room 902, Tinno Building, Nanshan District, Shenzhen, Guangdong, China.

## Versatile Applications



### Reverse Engineering

Rapidly repair, redesign, and transform complex industrial parts, then output CAD-ready models with the MINI.



### Digitize Historical Objects

Safely scan historical relics for preservation, restoration, educational opportunities, or even virtual museum exhibitions.



### Jewelry Design

MINI's professional-level scanning capabilities take jewelry design to the next level by accurately capturing fine details for efficient redesign, engraving, and customization.

## Versatile Applications



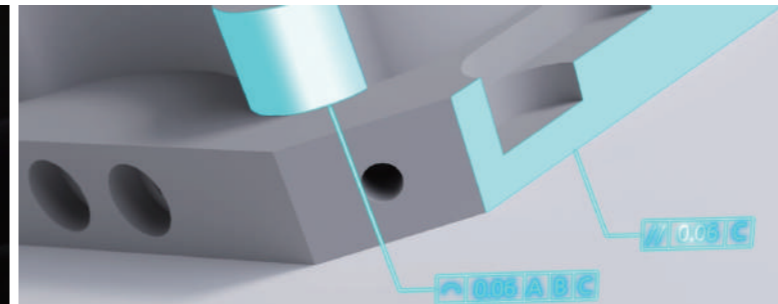
### Healthcare Solutions

Capture face and body data to perform pre-and post-operation diagnosis, create customized healthcare solutions, and plan plastic and restorative surgery.



### VR/AR and 3D Animation

MINI quickly creates detailed and rich 3D models, helping 3D modeling designers improve design efficiency and accelerate content creation for AR/VR, 3D animations, and video game development.



### Industrial Inspection

Streamline the quality control process by eliminating the need for time-consuming and laborious manual measurement methods through MINI's accurate non-contact 3D scans.



# Revopoint MINI

High-Precision Blue-Light 3D Scanner

REVOPOINT



# Revopoint MINI

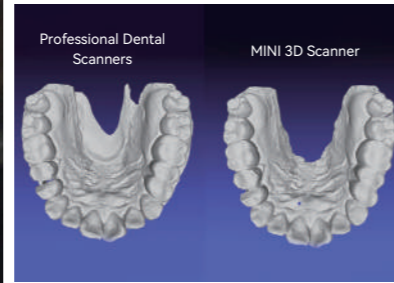
Revopoint MINI is a high-precision blue light 3D scanner optimized for small object scanning. And it's ready to streamline dental modeling, jewelry design, reverse engineering, industrial inspection, figurine and miniature model making, and even more applications. With the MINI on hand, you can expect to save up to 80% of the time and cost involved in 3D modeling.

## Versatile Scanning Methods



Effortlessly get scans using the MINI as a handheld or fixed scanner with a motorized turntable. Scan a wide variety of objects for all kinds of 3D modeling needs using either the MINI's marker or feature alignment modes.

## Outstanding Performance



### When Details Matter, Think MINI

Capture every detail of even the tiniest parts with MINI's industrial-grade single-frame precision of up to 0.02mm, comparable in performance to professional dental scanners.

### Professional-Grade Blue Light

Get better scans in ambient light with MINI's professional-grade ultra-high-resolution structured blue light technology. The MINI's blue light is skin safe for people and animals.

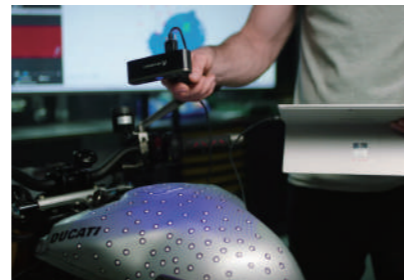


### Create High-Resolution 3D Models

The MINI's blue light technology easily creates high-resolution ready-to-print 3D models with a point distance of up to 0.05mm.

### Scan Smoothly

Up to 10fps scanning speeds, powerful optimized algorithms, and an onboard chip enable smooth frame stitching and efficient 3D model creation.



### Lightweight and Easy to Use

Weighing only 160g and quickly set up through a single USB 3.0 cable that transmits data and power, make the MINI a plug-and-play device that is ready to go.

 Up to 0.02mm Single-frame Precision	 Up to 0.05mm Point Distance	 Up to 10fps Scanning Speed
 Binocular blue light	 Compatibility: Windows, macOS, iOS, and Android	 Lightweight (160g) and Portable

## User-Friendly Software

MINI comes with a free powerful companion app designed for scanning and editing. Compatible with Windows, Android, macOS, and iOS, Revo Scan is your gateway software for performing 3D scans and editing models.



## Optimized for Your Workflow

The STL, OBJ, and PLY model formats output by Revopoint scanners are compatible with nearly all mainstream 3D printers and 3D modeling software. It is ideal for achieving a convenient and efficient cross-platform workflow.



## User Cases

